

Flap Fittings

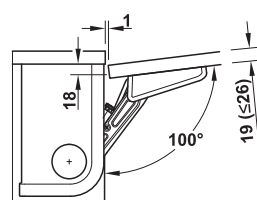
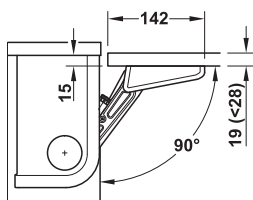
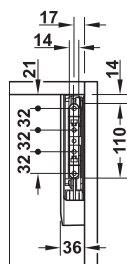
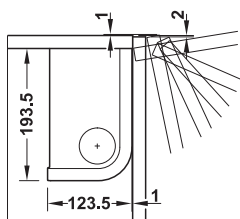
Stay flap fitting

**Free 3677 Complete set,
for one-piece flaps
made of wood or with aluminium frame**

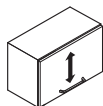


- Area of application: For wooden flaps and flaps with aluminium frame
- Opening angle: 90° or 100°
- Material: Fitting: Steel, cover cap: Plastic
- Finish: Fitting: Nickel plated, cover cap: Grey, RAL 9006
- Installation: Fitting for screw fixing, flap without tools (clip system) onto pre-mounted mounting bracket
- Hinges not required
- Flap locks in any position
- With soft close

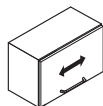
Installation



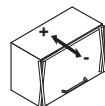
Adjustment facility



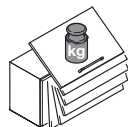
Height adjustment
+1/-1.5 mm



Side adjustment
+1/-1.5 mm



Tilt adjustment



Holding power adjustment

Sample measurements table for max. flap weight

Model	A	B	C	D	E	F
Flap height mm	Flap weight kg					
250	2.4 – 4.0	4.6 – 8.2	7.0 – 12.0	9.4 – 16.4	–	–
400	1.5 – 2.5	3.0 – 5.0	4.4 – 7.6	5.9 – 10.2	8.7 – 14.1	–
500	–	2.3 – 4.1	3.5 – 6.1	4.7 – 8.2	7.0 – 11.3	10.4 – 17.0
600	–	–	–	3.9 – 6.8	5.8 – 9.4	8.6 – 14.0
700	–	–	–	3.3 – 5.8	5.0 – 8.1	7.4 – 12.1

Supplied with

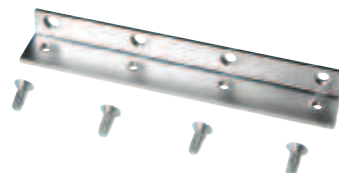
- 2 Stay flap fittings (left/right)
- 2 Cover caps for fitting
- 2 Mounting brackets (left/right)
- 2 Cover caps for mounting brackets
- Installation instructions

Model	Opening angle	
	90°	100°
A	372.91.521	372.91.511
B	372.91.522	372.91.512
C	372.91.523	372.91.513
D	372.91.524	372.91.514
E	372.91.525	372.91.515
F	372.91.526	372.91.516

Packing: 1 set

→ Free 3677 Accessories

Adapter for 20 mm aluminium profile



- Material: Zinc alloy
- Mounting: Suitable for left hand and right hand use

Finish	Side panel thickness mm	Cat. No.
Chrome plated	16	372.91.591
	19	372.91.592

Packing: 2 pieces